



Model N45

FRONTAL DISHWASHER WITH DOUBLE SKIN CABINET

Specially designed stainless steel, indented anti-clog wash arms, easily removed for cleaning, without tools • Pressed molded wash tank with radial corners and double filters for hygiene and easy maintenance • Insulated double skin cabinet construction reduces energy costs, noise levels and keeps the wash area ambient temperature, to an absolute minimum (62 dBA) • 34 cm wash height is suitable for washing trays and big pizza dishes • Balanced door for a comfort use • Peristaltic rinse aid dosing

Technical Characteristics

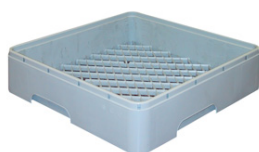


Dishwasher (Art.-Nr. 200608)		N45		
	(sec.)	Baskets/h	Dishes/h	Glasses/h
Electro mechanic control panel				
Wash cycle I *	120	30	420	750
Wash cycle II *	180	20	280	500
Dimensions (W x D x H)		555 x 575 x 845 mm		
Clear entry height		340 mm		
Basket size		450 x 450 mm		
Wash pump power		0,6 kW		
Tank element / boiler element		2 kW / 4,5 kW		
Total power / Voltage		5,1 kW - 400 Volt 3/N/PE 50 Hz		
Water supply temperature / water supply pressure / hardness water		max. 55°C / 200 - 400 kPa / min. 7 max. 12° F **		
Inlet water connection / drain / max. h drain		R 3/4" / 1" 3/4 / 65 mm		
Wash temperature / Rinse temperature		55°C / 85° C		
Tank capacity / Boiler capacity / Water consumption per cycle		11 l / 5,5 l / 2,5 l		
Pump capacity		287 l/min		
Features and accessories				
Double wash tank filters		●		
Pressed molded wash tank with radial corners		●		
Powerful anti-clog wash arms and contra-rotating light weight rinse arms		●		
Peristaltic rinse aid dosing		●		
Water supply pipe, drain pipe, main power cable		●		
Micro switch door		●		
Double skin cabinet		●		
Balanced door		●		
Rinse booster pump (PR)		○		
Drain pump (PS)		○		
Internal water softener (A) (max. 20° dF)		○		
Detergent dosing (PD)		○		
Break tank (B)		○		
Salt low warning lamp		○		
Digital control panel (Tronic)		○		
Equipment		1 universal, 2 of 14 dishes, 1 teaspoon rack		

* theoretical production with water supply at 50° C

** above 12° F we suggest a water softener

● = standard ○ = on demand



Cod. 901504 x 1



Cod. 901505 x 2



Cod. 901621 x 1